

SHIP SPECIFICATIONS & FACILITIES

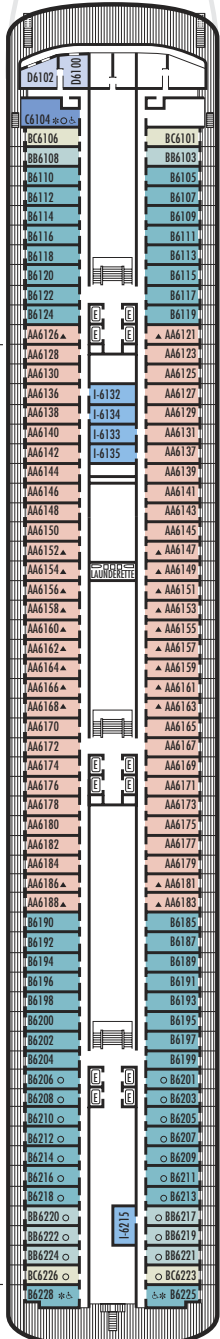
- 1,432 Guests
- 63,000 Gross Tons
- 780 Feet Long
- Automatic Stabilizers
- 10 Guest Decks
- 12 Guest Elevators
- 18 Public Rooms
- 3 Restaurants
- Outdoor Swimming Pools (one with sliding glass roof)
- Health Spa
- Movie Theatre
- Duty-free Shops
- Library
- Casino
- Beauty Salon
- Practice Tennis Courts
- Internet Center

STATEROOM SYMBOL LEGEND

- * Shower only
- Bath tub & shower
- ▲ 2 lower beds or converts to 1 queen-size
- Triple (2 lower beds, 1 sofa bed)
- Quad (2 lower beds, 1 sofa bed, 1 upper)
- △ Partial sea view
- ☆ 2 lower beds not convertible to a queen-size
- ✕ Fully obstructed view
- + Connecting rooms
- ♿ Staterooms AA7087, AA7088, B6225, B6228, G6104, D3391, D3396, D3429, FF1955, FF1964, G2500, G 2702, H1804, H1805, H1806, H1807, HH3430, HH3431, K2554, K2555, L2700 & S7034 are wheelchair accessible, shower only.

VERANDAH DECK

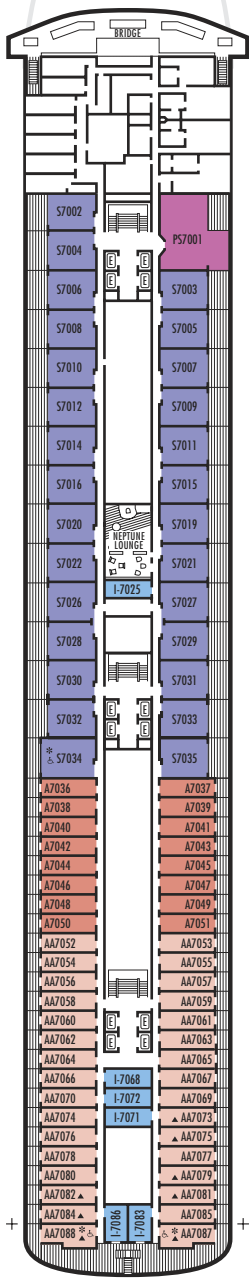
Staterooms 6100-6228
138 ft. from bow
to Staterooms 6100 & 6102.



52 ft. to stern
from Staterooms 6225 & 6228.

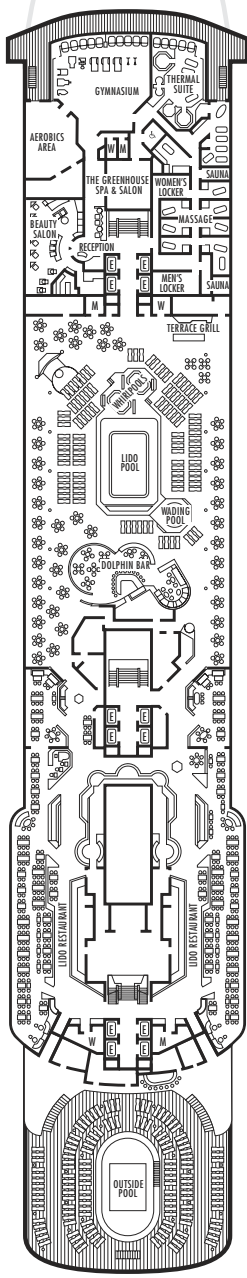
NAVIGATION DECK

Staterooms 7001-7088
226 ft. from bow
to Staterooms 7001 & 7002.

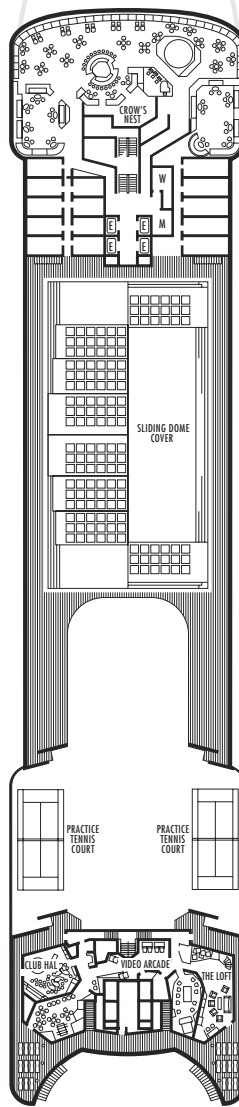


52 ft. to stern
from Staterooms 7087 & 7088.

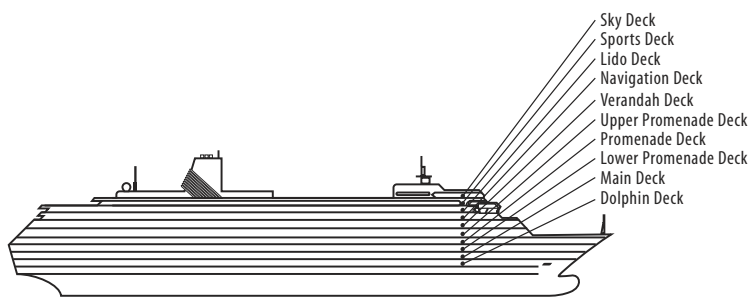
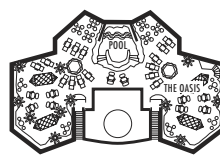
LIDO DECK



SPORTS DECK



SKY DECK



**ms Zaandam
ms Volendam**

DECK PLANS & STATEROOMS

The deck plans are color-coded by category of stateroom, and the category letter precedes the stateroom number in each room. All staterooms are equipped with DVD player*, television, telephone and multi-channel music.

Important Note: Not all staterooms within each category have the same furniture configuration and/or facilities. Appropriate symbols within the rooms on the deck plans describe differences from the stateroom descriptions below.

VERANDAH SUITES

PS
Penthouse Verandah Suite: Bedroom with 1 king-size bed, oversized whirlpool bath & shower, living room, dining room, dressing room, private verandah, pantry, 1 sofa bed for 2 persons, mini-bar, refrigerator, guest toilet, floor-to-ceiling windows.

S
Deluxe Verandah Suites: 2 lower beds convertible to 1 king-size bed, whirlpool bath & shower, large sitting area, dressing room, private verandah, 1 sofa bed for 2 persons, mini-bar, refrigerator, floor-to-ceiling windows.

A
Verandah Suites: 2 lower beds convertible to 1 queen-size bed, 1 sofa bed, whirlpool bath & shower, sitting area, private verandah, mini-bar, refrigerator, floor-to-ceiling windows.

AA B BC
Verandah Suites: 2 lower beds convertible to 1 queen-size bed, whirlpool bath & shower, sitting area, private verandah, mini-bar, refrigerator, floor-to-ceiling windows.

OUTSIDE STATEROOMS

C D DA DD E EE
F G H
Large: 2 lower beds convertible to 1 queen-size bed, bathtub & shower. All DD-category staterooms have partial sea views.

FF
Large: 2 lower beds convertible to 1 queen-size bed, 1 sofa bed & pullman upper, bathtub & shower.

HH
Large: 2 lower beds convertible to 1 queen-size bed, bathtub & shower. All HH-category staterooms have fully obstructed views.

INSIDE STATEROOMS

I J K
Large: 2 lower beds convertible to 1 queen-size bed, shower.

L
Large: 2 lower beds convertible to 1 queen-size bed, 1 sofa bed & pullman upper, shower.

M MM
Large: 2 lower beds convertible to 1 queen-size bed, 1 sofa bed, shower.

N NN
Standard: 2 lower beds convertible to 1 queen-size bed, 1 sofa bed & pullman upper, shower.

*DVD players will be available in all staterooms for ms Volendam after December 19, 2005. Currently, categories PS-BC have VCRs. All other categories are equipped with televisions only.

For sailings prior to Holiday 2005 please see the Holland America website at www.hollandamerica.com for stateroom category information.

★ ms Volendam Show Lounge
★★ ms Zaandam Show Lounge